

MRVseriesmodularreliefvalvescancontrolflowforpositivedirectionpassoilport. Flowcanbeadjustedbyhandle.Itpasestocheckvalveforreverseflow.

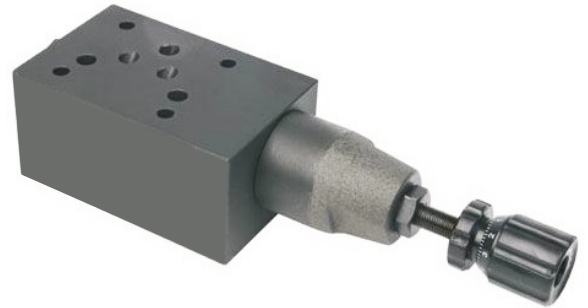
Orderingdetails

MRV	02	P	K	1	20
Sort	Nominalsize	Relief form	Adjustmenttype	Pressure adjustment range	Design code
Modular reliefvalve	02:NG6Cetop3 03:NG10Cetop5 04:NG16Cetop7 06:NG22Cetop8	P:P→T A:A→T B:B→T C:A→T B→T D:A→B B→A	Nocode:Withoutknob K:Withplasticnob	1:8~70bar 2:35~140bar 3:70~250bar	20

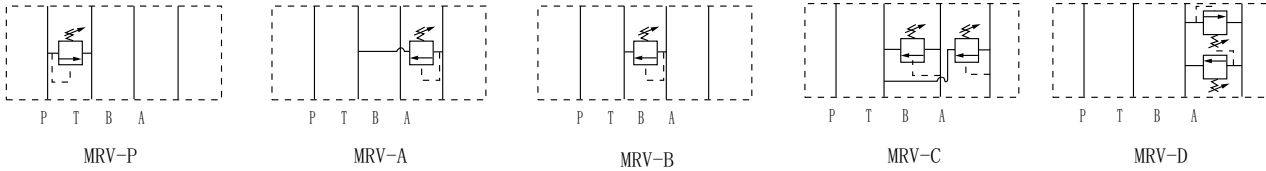


Technicalspecification

Model		MRV-02	MRV-03	MRV-04	MRV-06
Max.flowrate (l/min)		35	70	200	450
Workingpressure (MPa)		25			
Weight(kgs)	A,B,P	1.5	3.3	6	12.2
	C,D	1.7	3.7	—	—



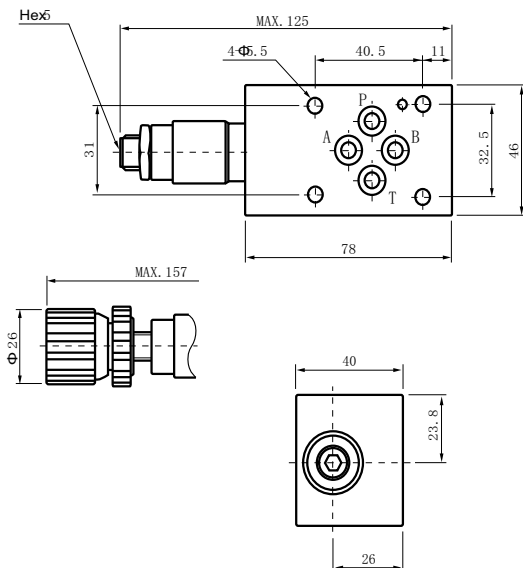
Symbolist



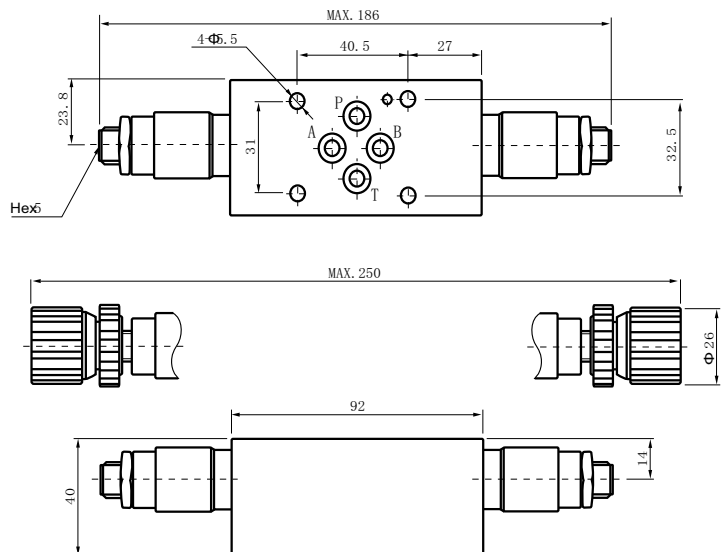
Dimensions

Unit:mm

MRV-02A



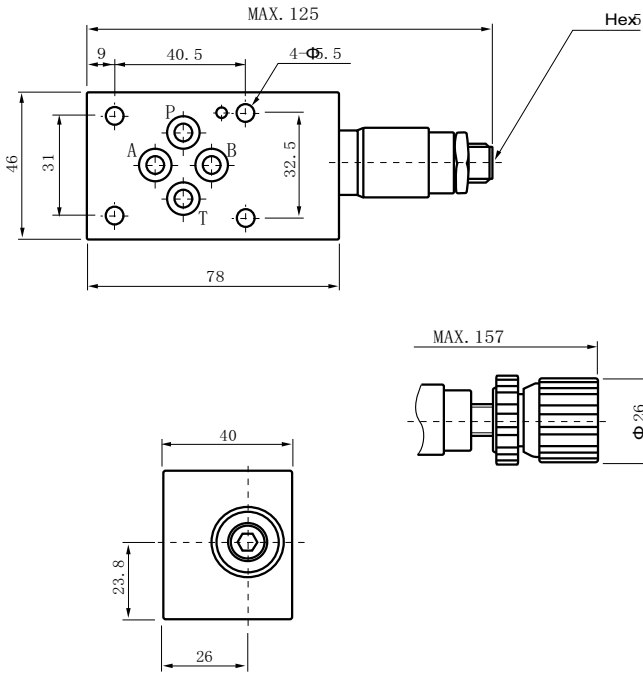
MRV-02C



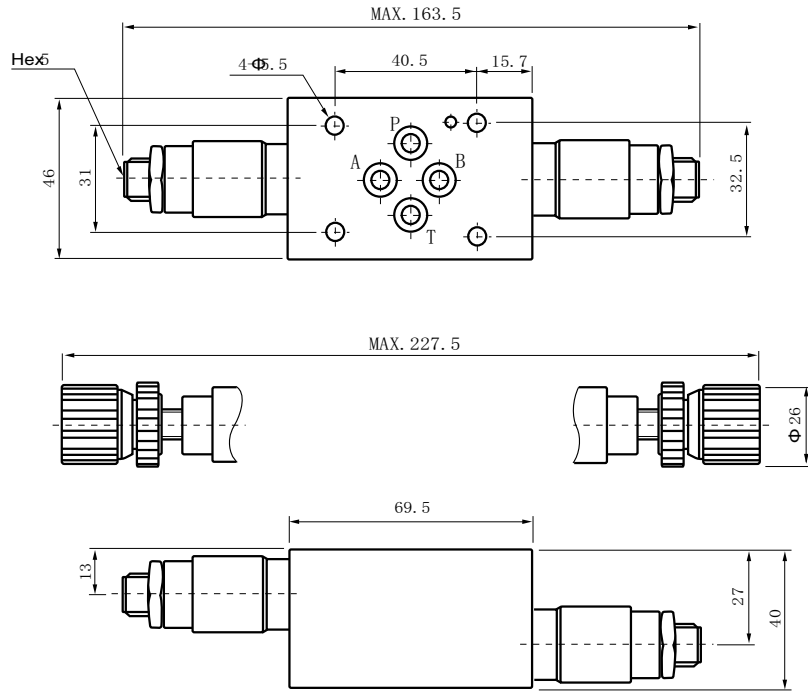
Dimensions

Unit:mm

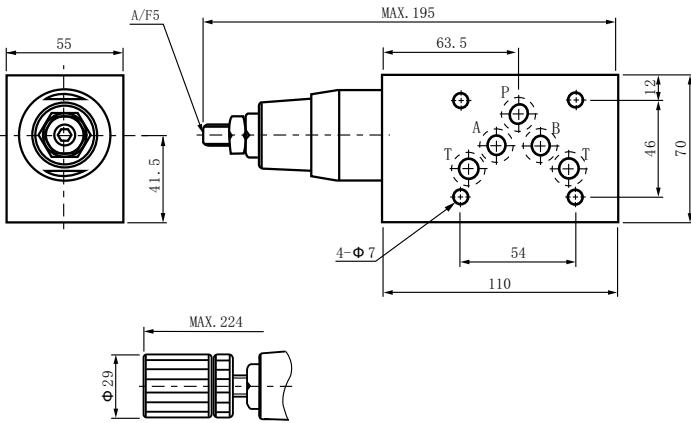
MRV-02B/P



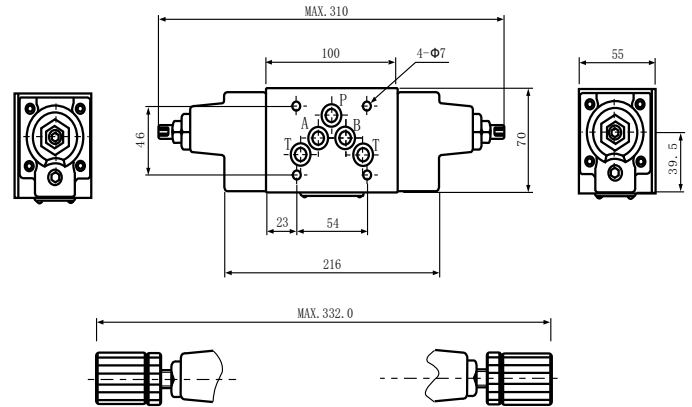
MRV-02D



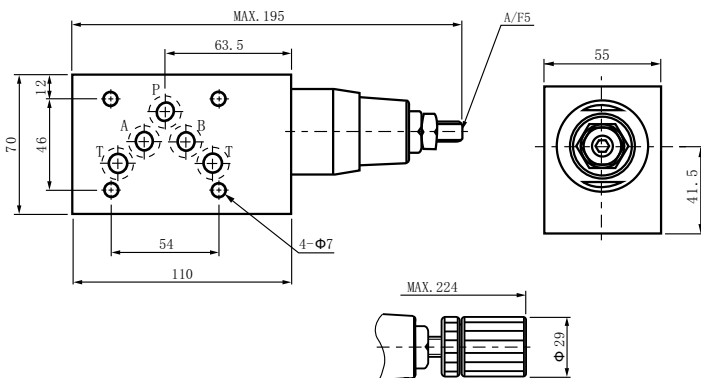
MRV-03A



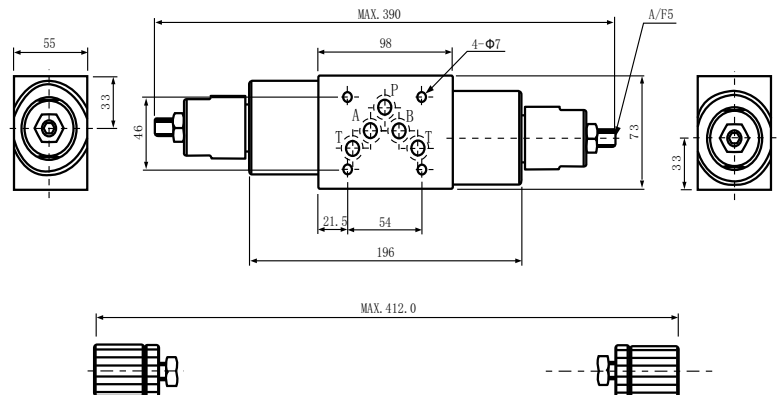
MRV-03C



MRV-03B/P



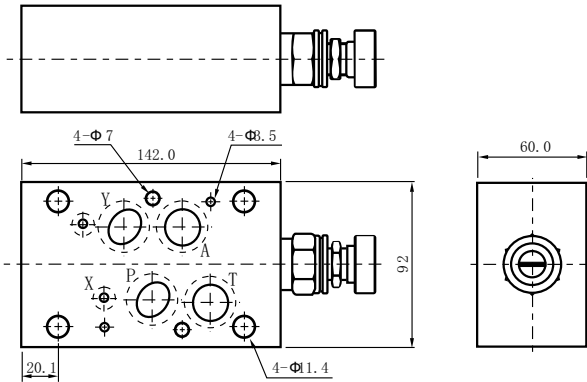
MRV-03D



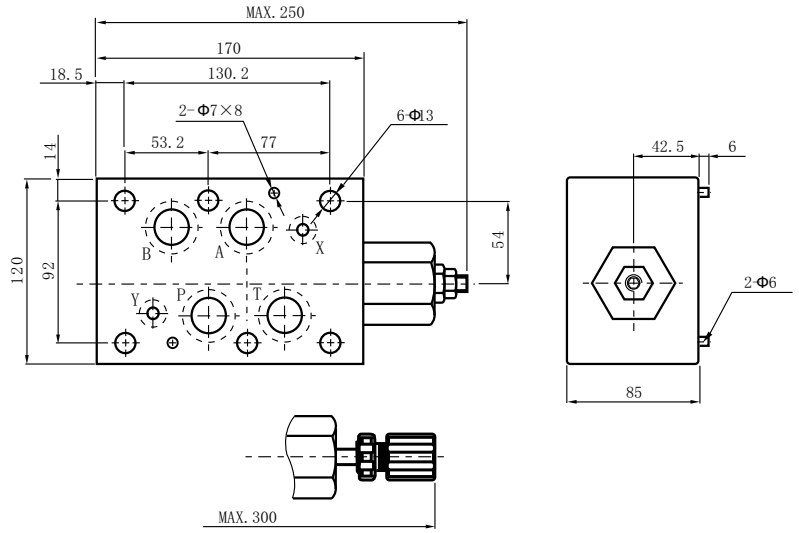
Dimensions

Unit:mm

MRV-04P



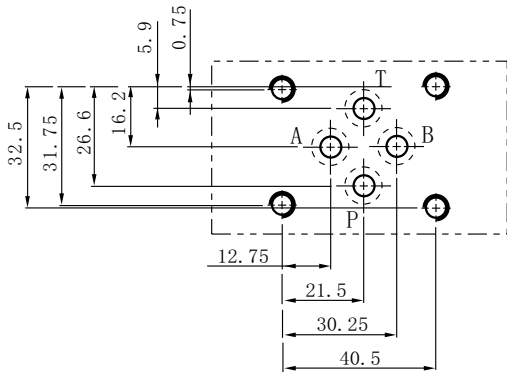
MRV-06P/A/B



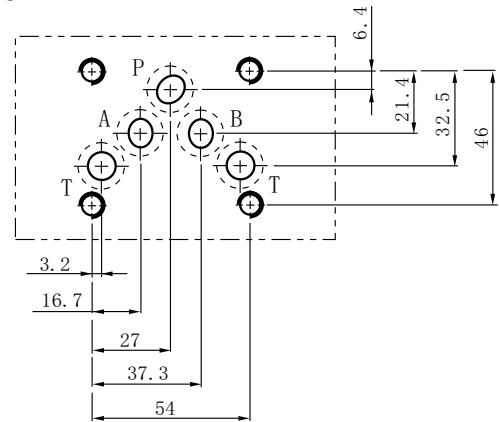
Mountingsize

Unit:mm

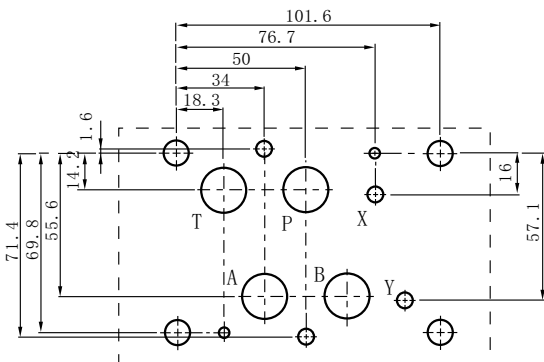
MRV-02



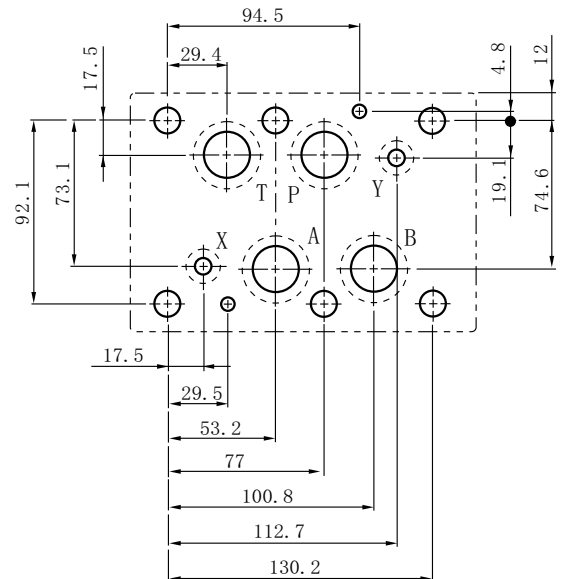
MRV-03



MRV-04



MRV-06



MBRVseriesmodularreducingvalvesareusedtoreducethepressureinacertaincircuit lowerthanofthemaincircuit.



**Orderingdetails**

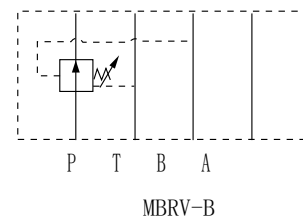
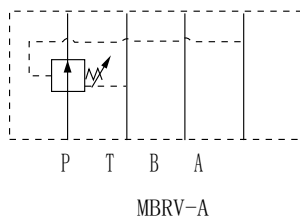
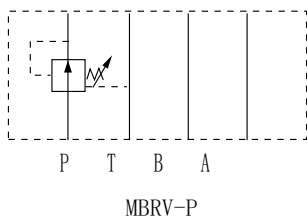
MBRV	02	P	K	1	20
Sort	Nominalsize	Pilotoil port	Adjustmenttype	Pressure adjustment range	Design code
Modular relief valve	02:NG6Cetop3 03:NG10Cetop5 04:NG16Cetop7 06:NG22Cetop8	P:Pport A:Aport B:Bport	Nocode:Withoutknob K:Withplastickob	1:8~70bar 2:35~140bar 3:70~250bar	20

**Technicalspecification**

Model	MBRV-02	MBRV-03	MBRV-04	MBRV-06
Max.flowrate (l/min)	35	70	300	450
Workingpressure (MPa)	25			
Weight(kgs)	1.2	3.3	7.5	11.6



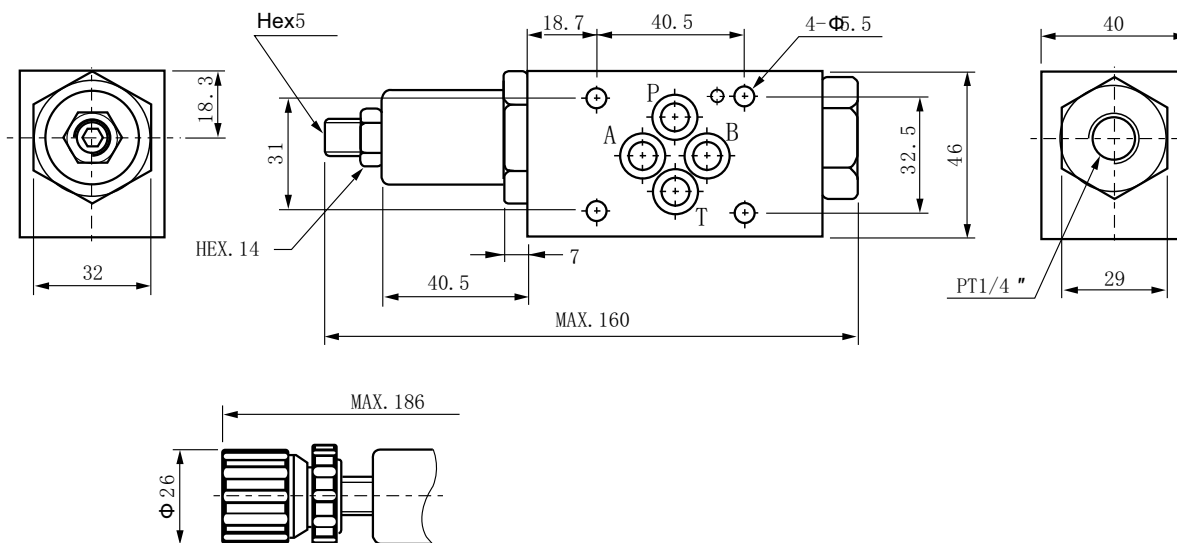
**Symbolist**



**Dimensions**

Unit:mm

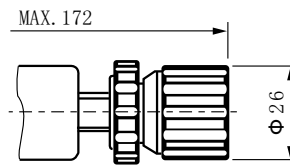
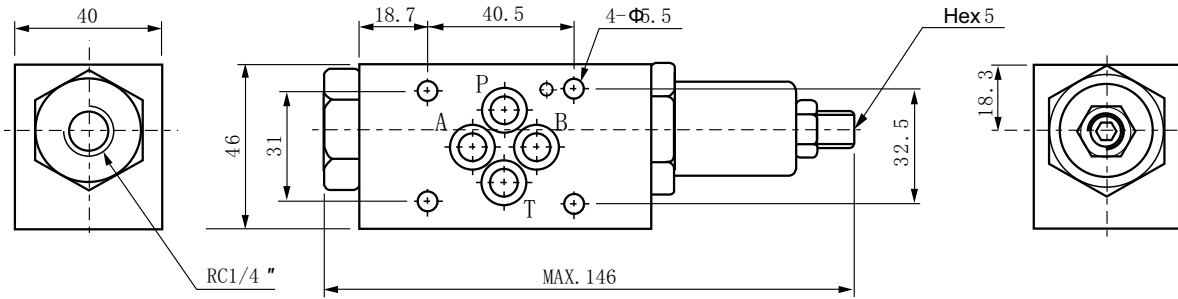
**MBRV-02B**



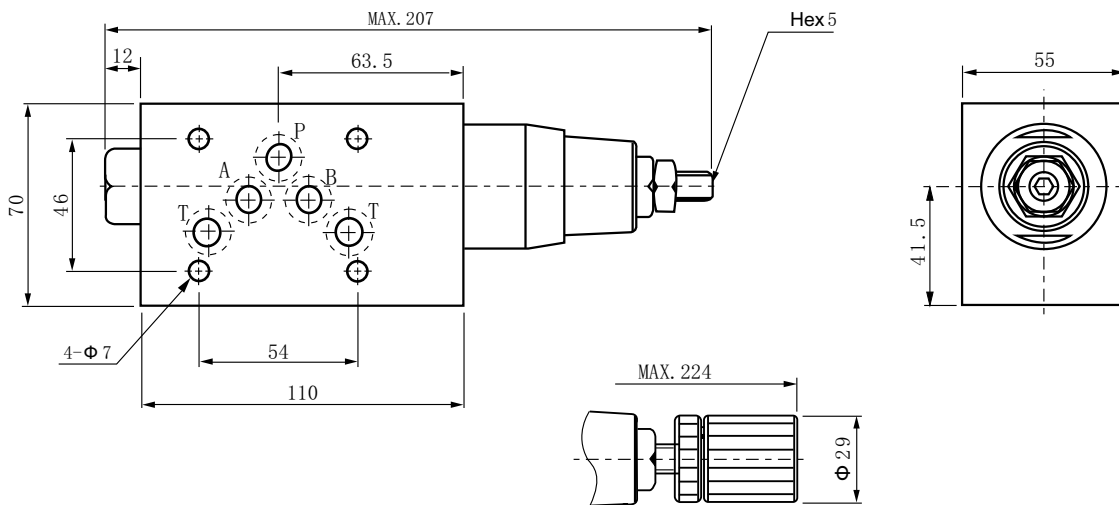
Dimensions

Unit:mm

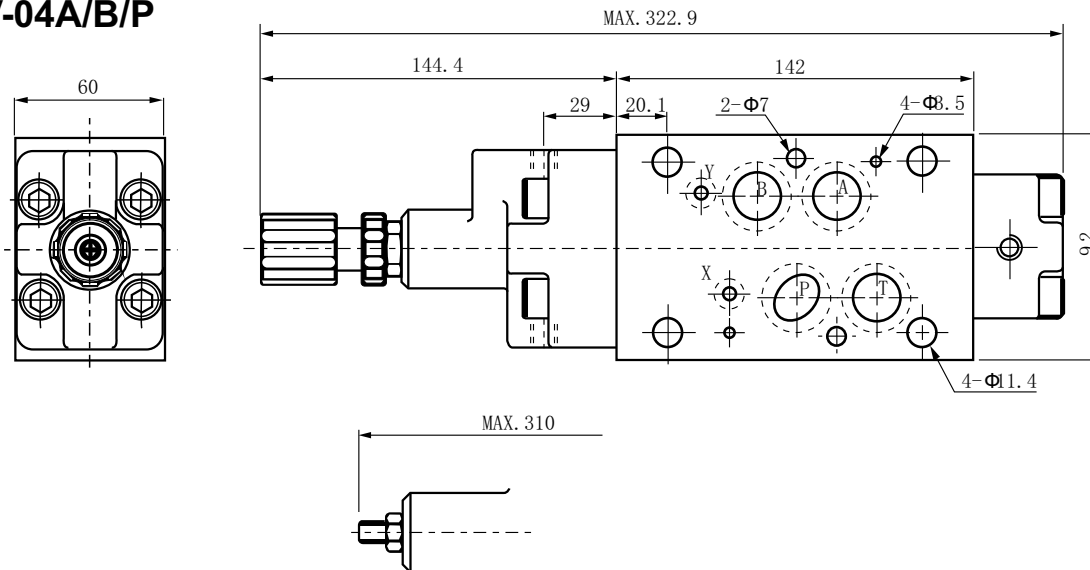
MBRV-02A/P



MBRV-03A/B/P



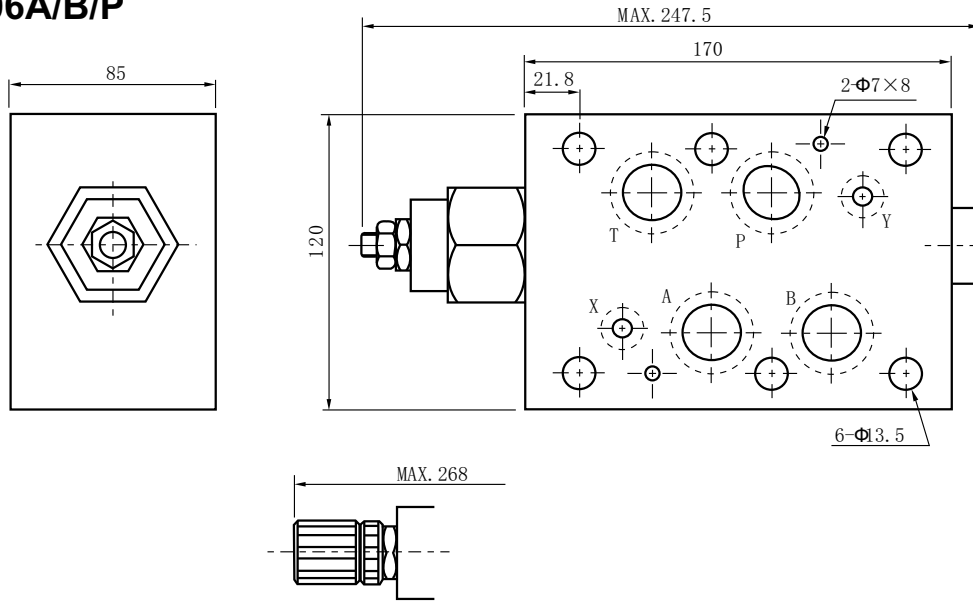
MBRV-04A/B/P



Dimensions

Unit:mm

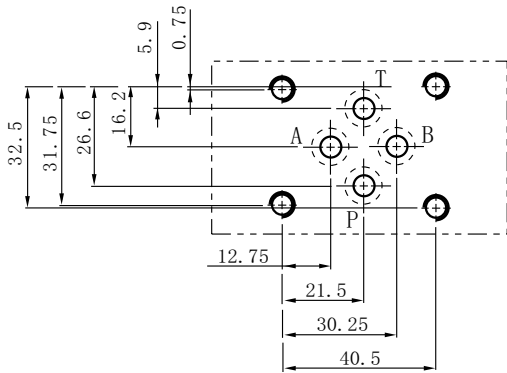
MBRV-06A/B/P



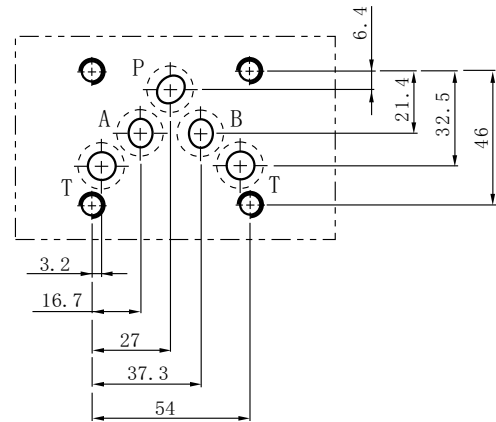
Mountingsize

Unit:mm

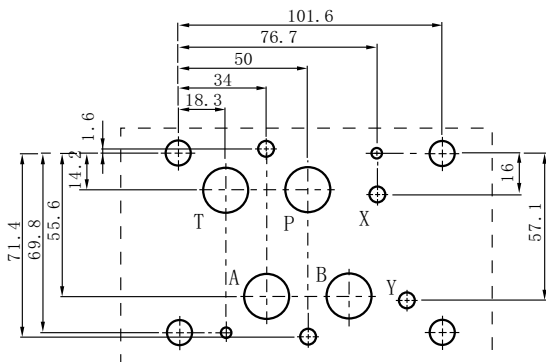
MBRV-02



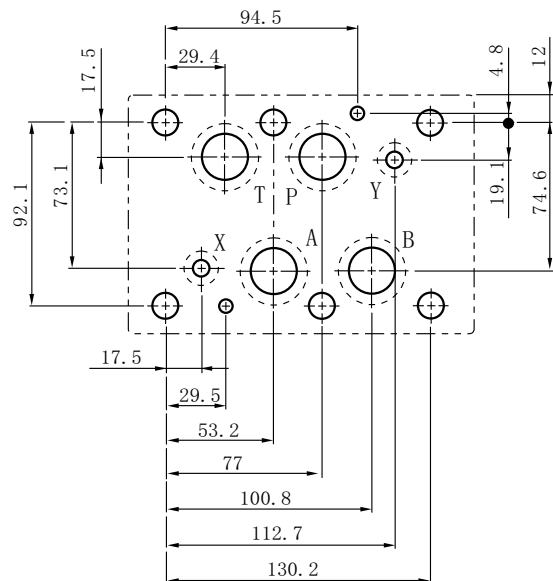
MBRV-03



MBRV-04

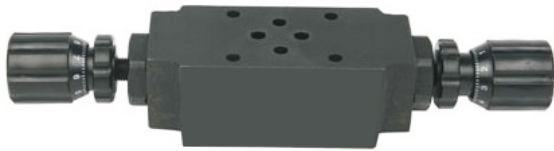


MBRV-06



MTCVseriesmodularthrottlecheckvalvesareusedto restrictflowinonedirection whileallowingfree-flowintheoppositedirectionascheckvalves.

Orderingdetails

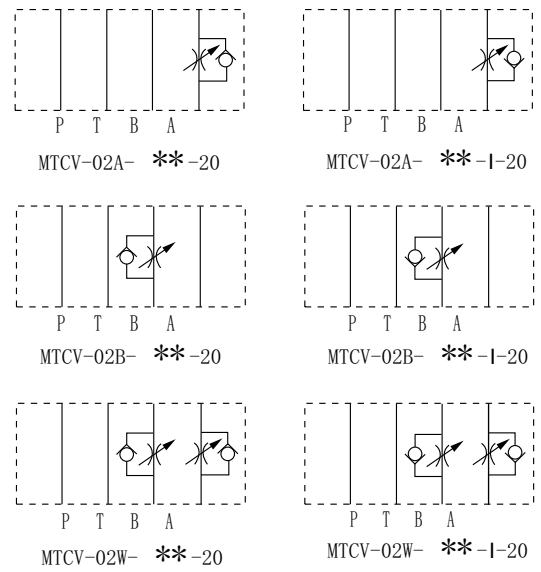


MTCV	02	A	K	I	20
Sort	Nominalsize	Pilotoil port	Adjustment type	Oilcontrol	Design code
Modular throttle checkvalve	02:NG6Cetop3 03:NG10Cetop5 04:NG16Cetop7 06:NG22Cetop8	A:Aport B:Bport W:A&B port	Nocode: Withoutknob K:Withplastic kob	Nocode: Meterout I:Meterin	20

Technicalspecification

Model	MTCV-02	MTCV-03	MTCV-04	MTCV-06	
Max.flowrate (l/min)	35	70	300	450	
Workingpressure (MPa)	25				
Weight(kgs)	A,B	1.2	2.6	5.2	12.2
	W	1.4	2.8	5.5	13

Symbolist

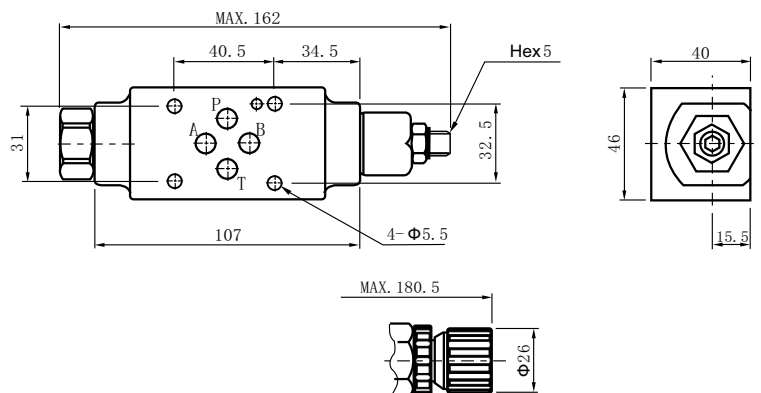
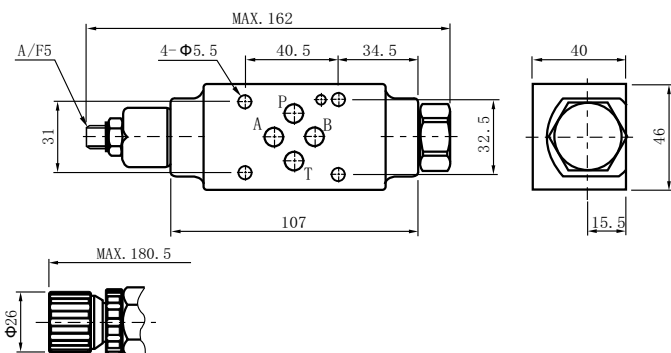


Dimensions

Unit:mm

MTCV-02A

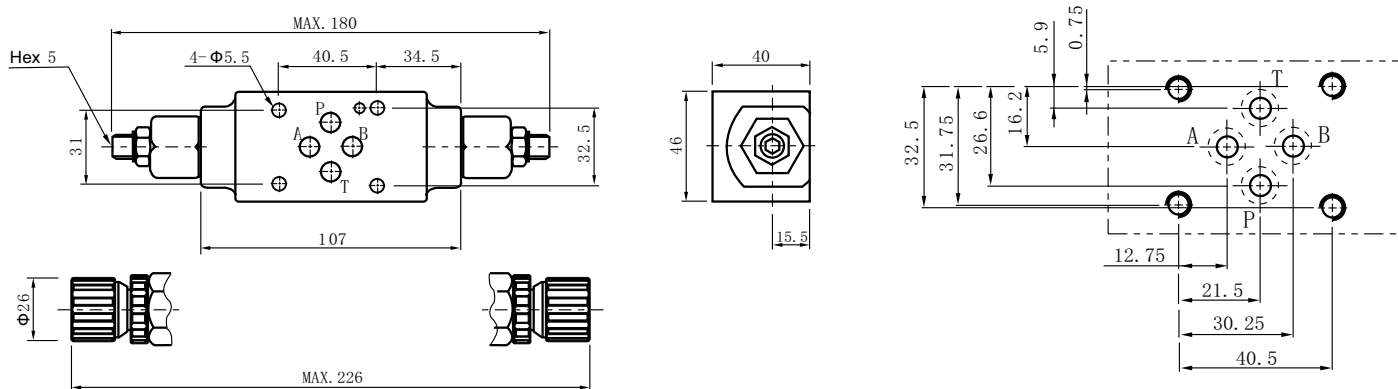
MTCV-02B



Dimensions

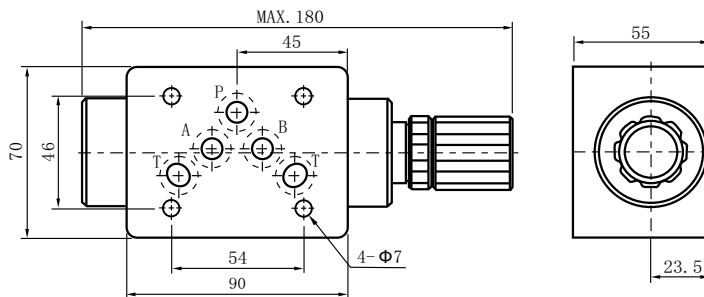
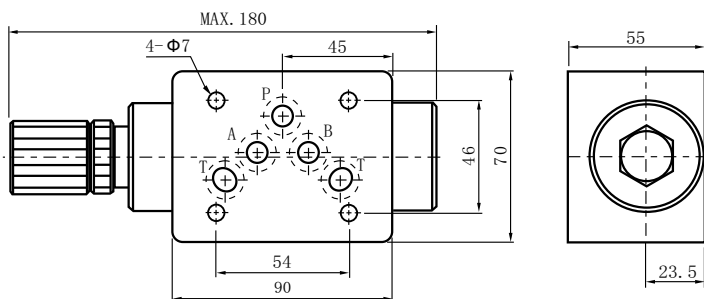
Unit:mm

MTCV-02W

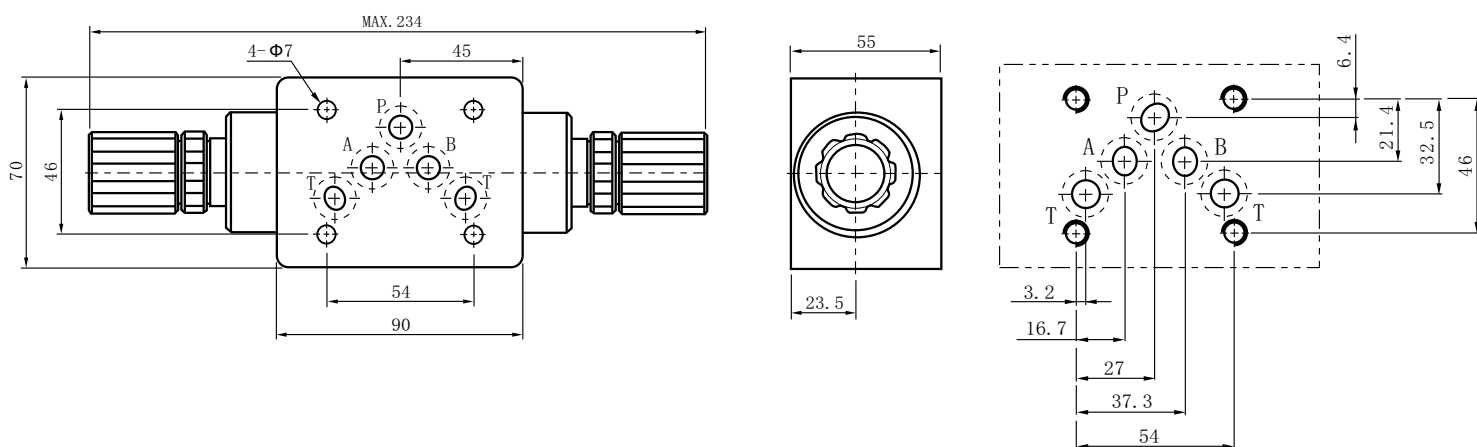


MTCV-03A

MTCV-03B



MTCV-02W

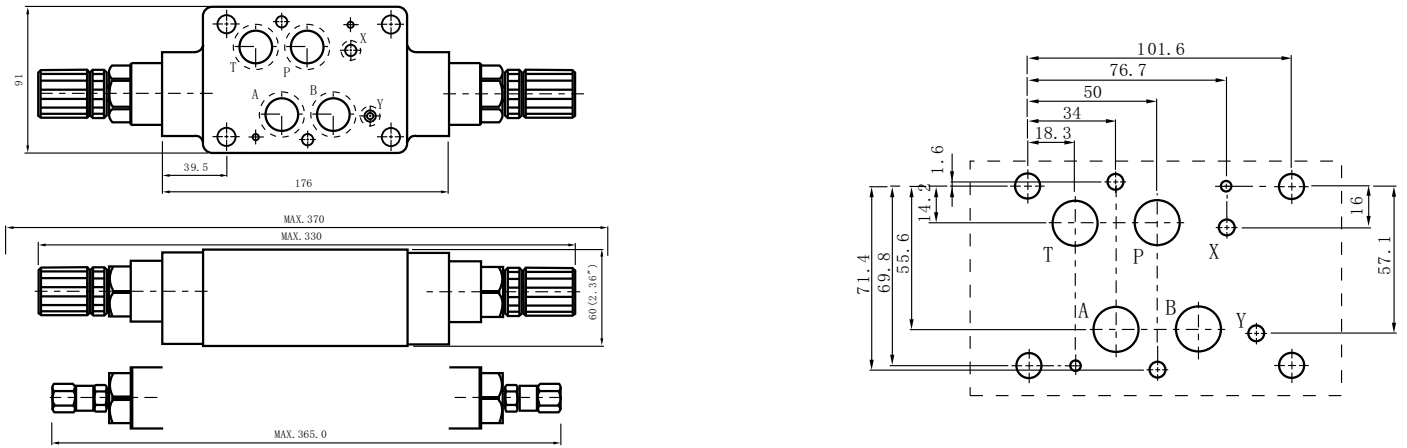




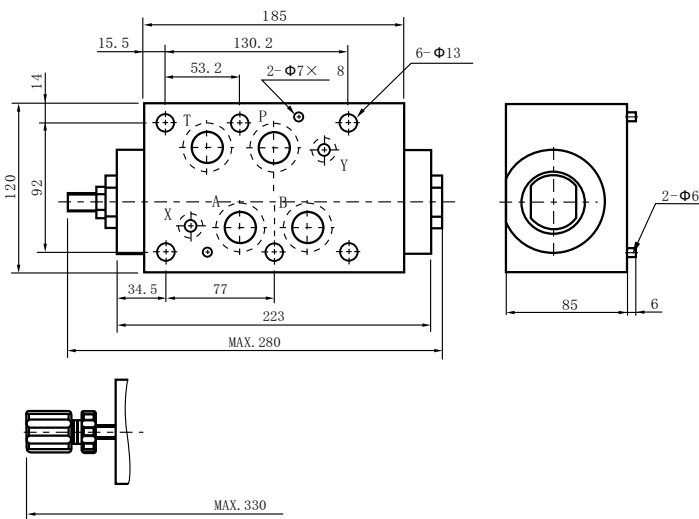
Dimensions

Unit:mm

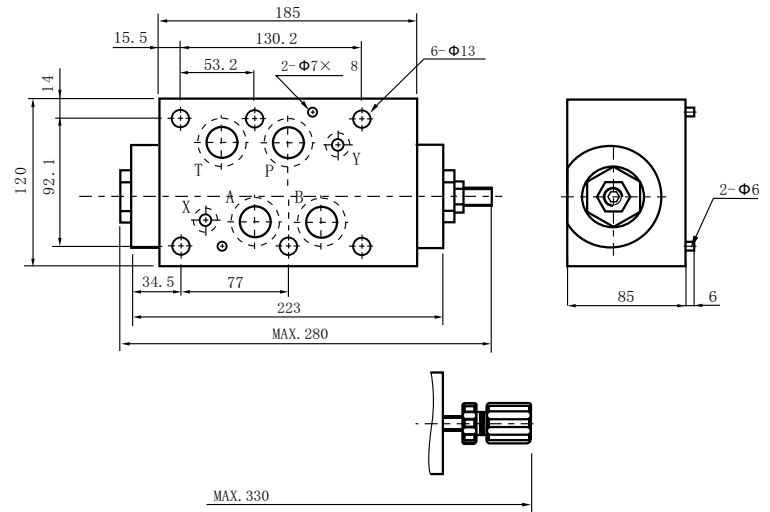
MTCV-04W



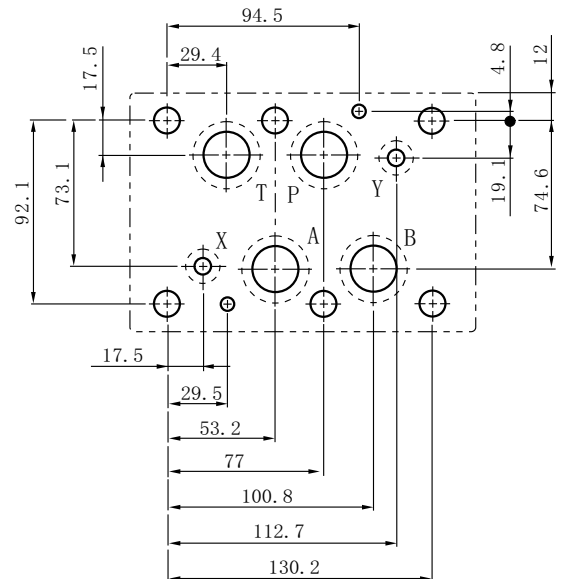
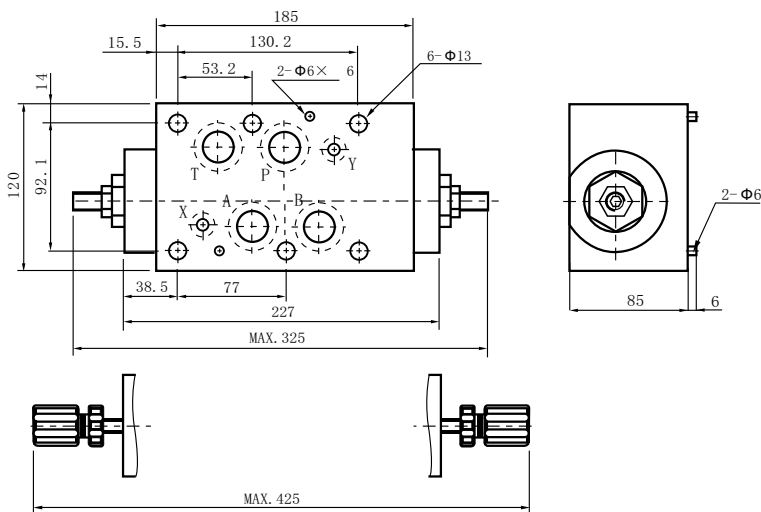
MTCV-06A



MTCV-06B



MTCV-06W



MTseriesmodularcheckvalvesareusedtorestrictflowbyhandle.

MTCVseriesmodularthrottlecheckvalvesareusedtorestrictflowonlyinonedirection.



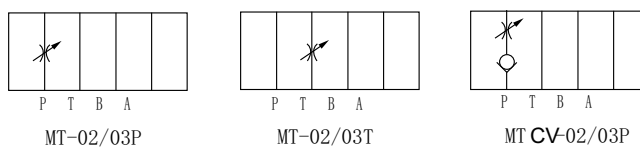
Orderingdetails

MT(CV)	02	P	K	20
Sort	Nominalsize	Pilotoil port	Adjustmenttype	Design code
MT:Modular throttlevalve MTCV:Modular throttlecheck valve	02:NG6Cetop3 03:NG10Cetop5	P:Pport T:Tport	Nocode:Withoutknob K:Withplastickob	20

Technicalspection

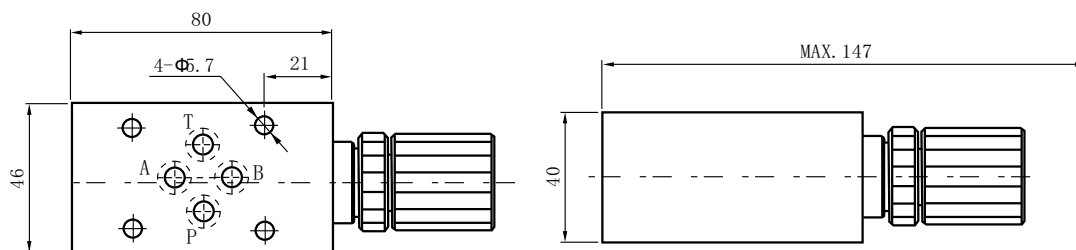
Model	MT(CV)-02	MT(CV)-03
Max.flowrate (l/min)	35	70
Workingpressure (MPa)	25	
Weight(kgs)	1.2	2.4

Symbollist

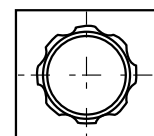


Dimensions

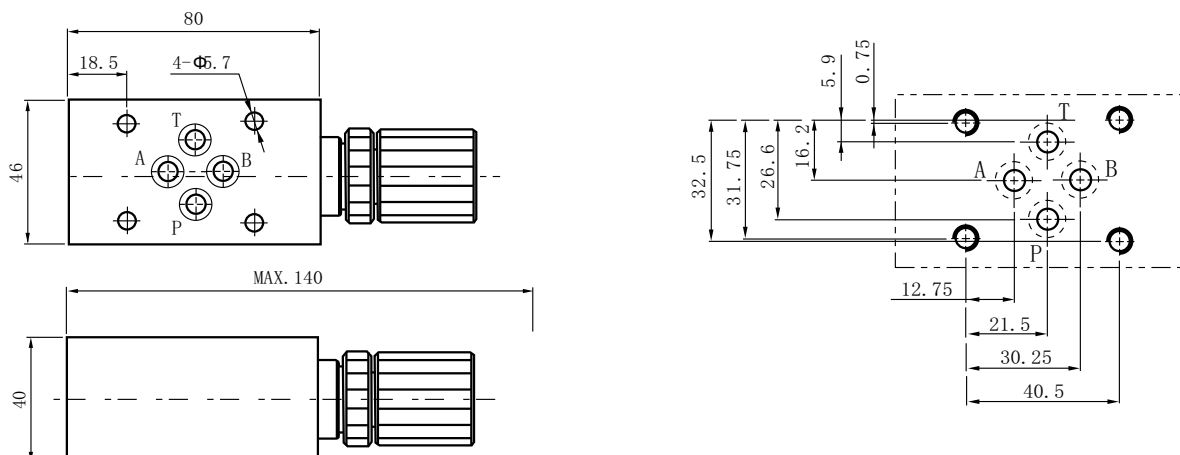
MT-02



Unit:mm



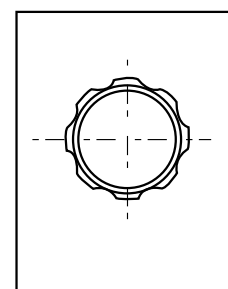
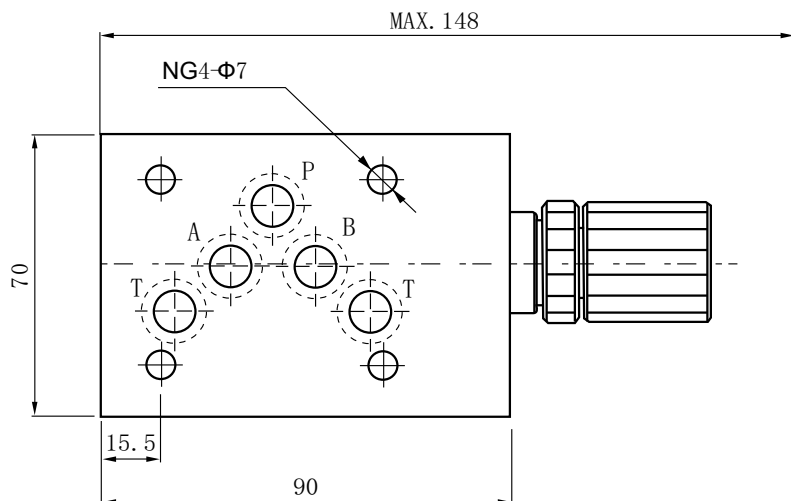
MTCV-02



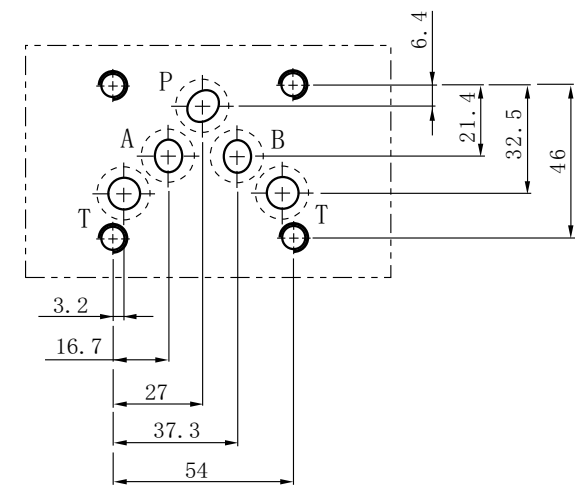
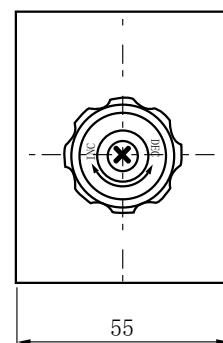
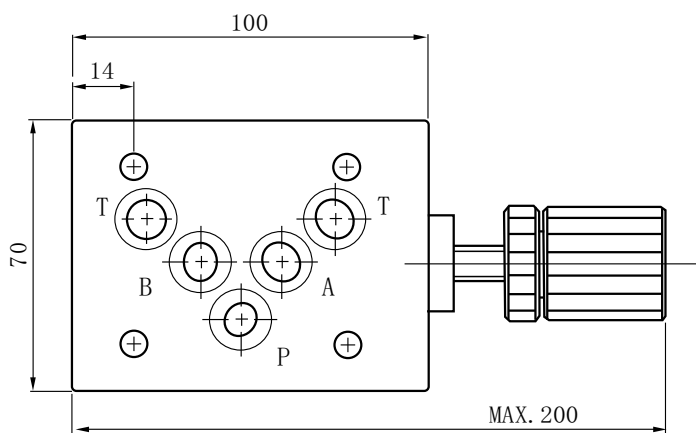
Dimensions

Unit:mm

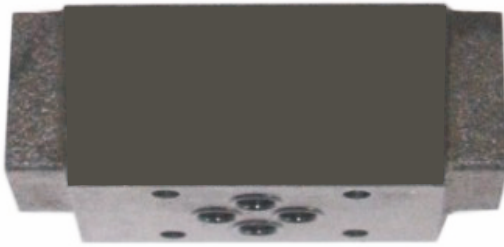
MT-03



MTCV-03



MPCVseriesmodularpilotooperatedcheckvalvesarepilotooperatedstylesandwich valves.Thesevalvesusedtocloseoneortwooilports.



**Orderingdetails**

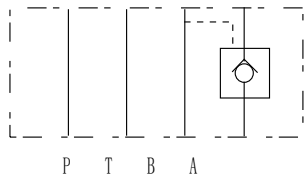
MPCV	02	A	05	20
Sort	Nominalsize	Pilotoilport	Kracking pressure	Design code
Modularpilot operated checkvalve	02:NG6Cetop3 03:NG10Cetop5 04:NG16Cetop7 06:NG22Cetop8	A:Aport B:Bport W:A&Bport	05:0.35bar 50:3.5bar	20

**Technicalspecification**

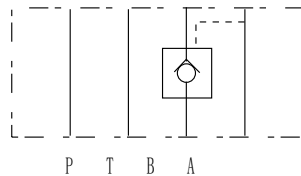
Model	MPCV-02	MPCV-03	MPCV-04	MPCV-06
Max.flowrate (l/min)	35	70	200	450
Workingpressure (MPa)	25			
Weight(kgs)	1.1	2.6	5.5	12.5



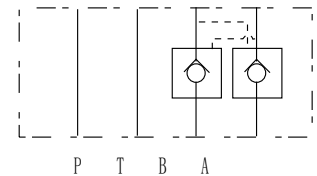
**Symbolist**



MPCV-02A



MPCV-02B

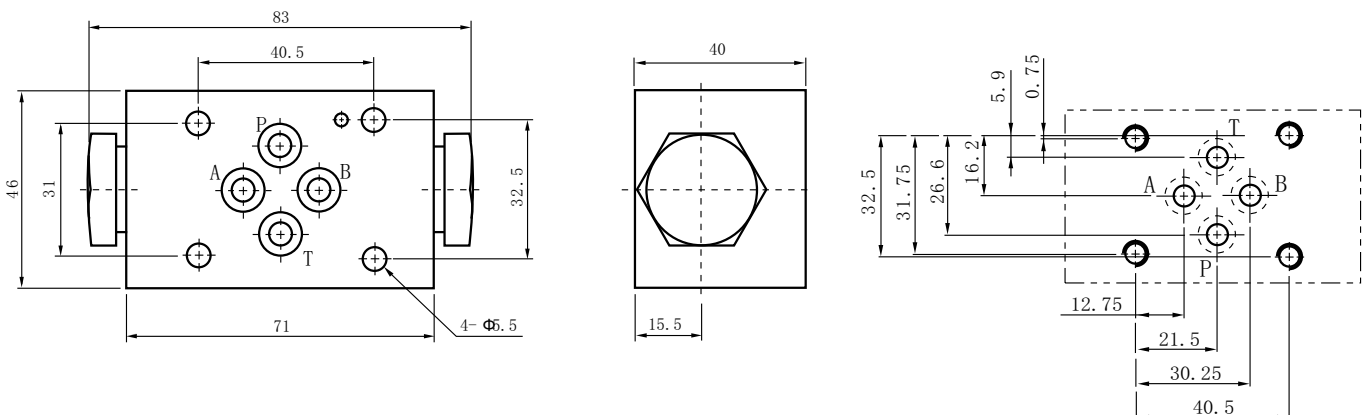


MPCV-02W

**Dimensions**

Unit:mm

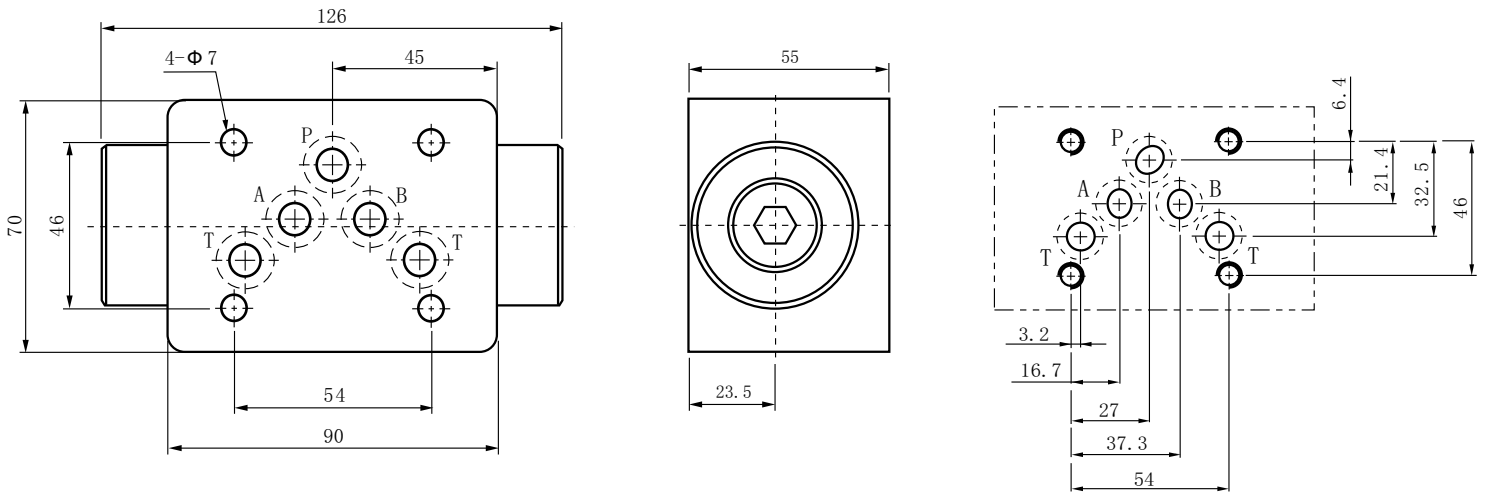
**MPCV-02**



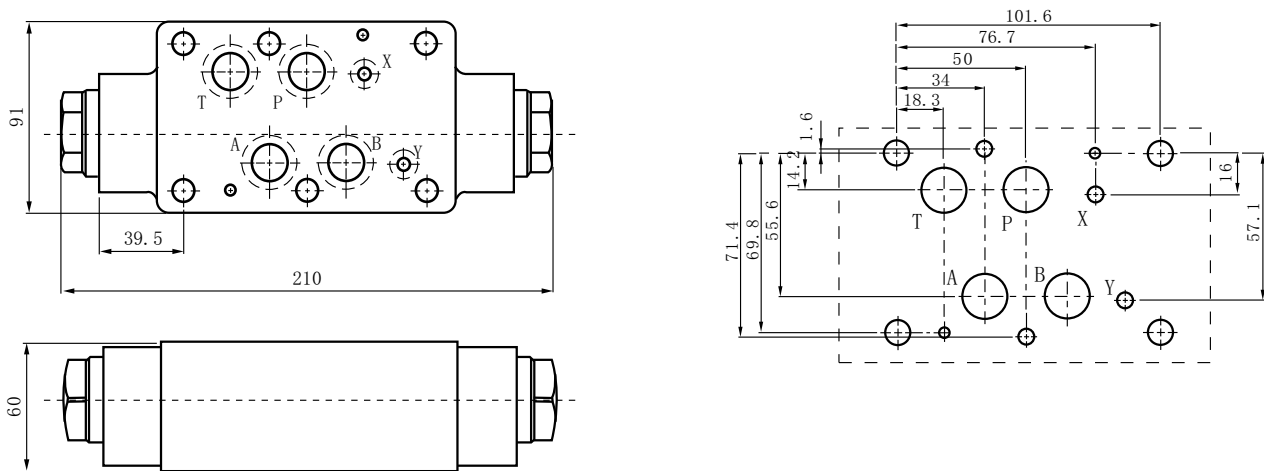
Dimensions

Unit:mm

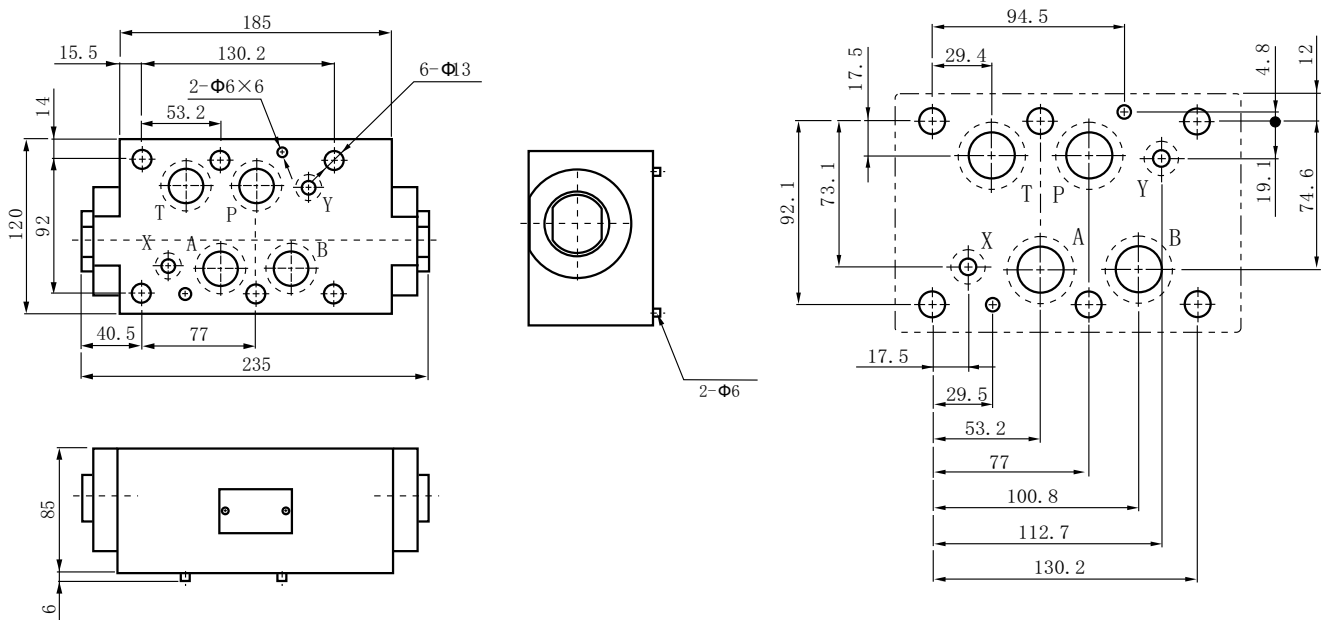
MPCV-03



MPCV-04



MPCV-06



MCSseriesmodularbalancevalvescanbalancethepressureofonecertainline inhydraulicsystem.



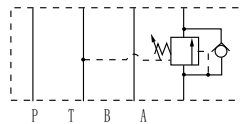
Orderingdetails

MCS	02	A	K	1	20
Sort	Nominalsize	Pilotoil port	Adjustmenttype	Pressure adjustment range	Design code
Modular balance valve	02:NG6Cetop3	A:Aport B:Bport	Nocode:Withoutknob K:Withplastic knob	1:8~70bar 2:35~140bar 3:70~250bar	20

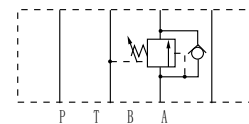
Technicalspecification

Model	MCS-02
Max.flowrate (l/min)	35
Workingpressure (MPa)	25
Weight(kgs)	1.5

Symbolist



MCS-02A



MCS-02B

Dimensions

Unit:mm

